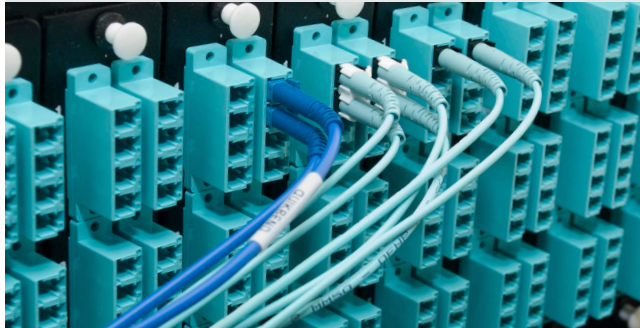


Bend Tolerant Fiber Optic Cable Assemblies

Significantly Improves Network Performance



Over the years, Fiber Optics has become a standard in connectivity. Not only does it transmit data at fast speeds but over longer distances as well. Fiber does however, have its limitations. Sometimes just one bend in the cable creates enough signal loss to cause system unreliability and network downtime – thus decreasing productivity and profits...until now.

Introducing Quiktron's Bend Tolerant Fiber Optic Cable Assemblies designed specifically to improve the overall performance of fiber networks by significantly reducing system attenuation, which commonly causes system unreliability and downtime. Bend Tolerant Fiber Optic Cable Assemblies experience minimal signal loss with bends as small as 7.5mm, and comes with a lifetime warranty against defects of materials and workmanship.

Benefits:

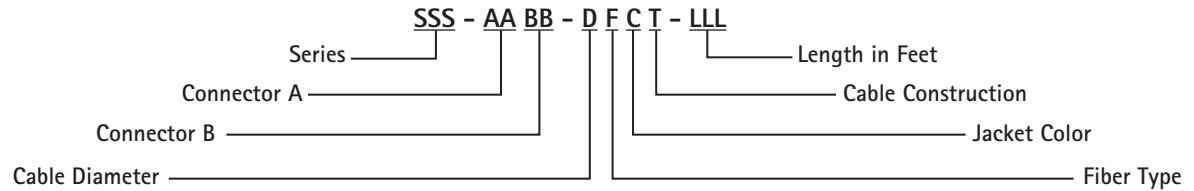
- Assemblies can be seamlessly connected to legacy fiber networks without degrading network performance
- Conforms with current fiber standards, for guaranteed compatibility with existing industry-standard single-mode fibers
- Meets or exceeds industry standards for return loss and reflectance
- Factory terminated for superior performance
- 100% optically tested
- Made in USA

Features:

- Product lines for both single-mode and multimode connectivity
- 7.5mm and 10mm minimum bend radii cable available
- 10Gb Ethernet performance over 300m and 1Gb performance over 1km
- 50µm Multimode 10Gb ISO/IEC OM3 compliance
- Single-mode ITU G.657A and ITU G.657A/B compliance
- Corning Gold jumpers made with 100% Corning components
- Q-Series Quikbend jumpers are domestically manufactured using the highest quality components

Part Number Configuration Options

for Corning Gold and Q-Series QuikBend Tolerant Cable Assemblies



SSS (Series)

CFJ Corning Gold Cable and Connectors
 QFJ Q-Series Cable and Connectors

AA (Connector A) followed by BB (Connector B)

00 No Connector
 01 LC
 02 SC
 03 ST
 04 FC
 05 Angled LC
 06 Angled SC
 08 Angled FC

D (Cable Diameter)

2 2mm
 3 3mm

F (Fiber Type)

5 7.5mm OM3 Multimode
 6 10mm G.657.A Single-mode
 7 7.5mm G.657.A/B Single-mode

C (Jacket Color)

C Aqua (standard for 50µm MM)
 1 Blue (standard for 10mm SM)
 9 Yellow (standard 7.5mm G.657.A/B)

T (Cable Construction)

1 Simplex Riser
 2 Duplex Riser
 S Simplex Plenum
 D Duplex Plenum

LLL (Length in Feet)

Bend Tolerant 50µm Laser-Optimized Connector Specifications

| Brand | Connector | Minimum Bend Radii | Typical Insertion Loss | Max. Insertion Loss | Standard Polish | Cable Diameter | Housing | Ferrule |
|---------------------|-----------|--------------------|------------------------|---------------------|-----------------|----------------|-----------|---------|
| Corning Gold Series | ST | 7.5mm | 0.20dB | 0.50dB | PC | 2.0/3.0 | Composite | Ceramic |
| Corning Gold Series | SC | 7.5mm | 0.20dB | 0.50dB | PC | 2.0/3.0 | Composite | Ceramic |
| Corning Gold Series | LC | 7.5mm | 0.20dB | 0.50dB | PC | 2.0/3.0 | Composite | Ceramic |
| Q-Series QuikBend | ST | 7.5mm | 0.25dB | 0.50dB | PC | 2.0/3.0 | Composite | Ceramic |
| Q-Series QuikBend | SC | 7.5mm | 0.25dB | 0.50dB | PC | 2.0/3.0 | Composite | Ceramic |
| Q-Series QuikBend | LC | 7.5mm | 0.25dB | 0.50dB | PC | 2.0/3.0 | Composite | Ceramic |

Bend Tolerant Single-mode Connector Specifications

| Brand | Connector | Minimum Bend Radii | Typical Insertion Loss | Max. Insertion Loss | Reflectance | Standard Polish | Cable Diameter | Housing | Ferrule |
|---------------------|-----------|--------------------|------------------------|---------------------|-------------|-----------------|----------------|-----------|---------|
| Corning Gold Series | FC | 7.5 or 10mm | 0.20dB | 0.50dB | -55dB | UPC | 2.0/3.0 | Metal | Ceramic |
| Corning Gold Series | FC/APC | 7.5 or 10mm | 0.25dB | 0.50dB | -65dB | APC | 2.0/3.0 | Metal | Ceramic |
| Corning Gold Series | LC | 7.5 or 10mm | 0.20dB | 0.50dB | -55dB | UPC | 2.0/3.0 | Composite | Ceramic |
| Corning Gold Series | SC | 7.5 or 10mm | 0.20dB | 0.50dB | -55dB | UPC | 2.0/3.0 | Composite | Ceramic |
| Corning Gold Series | SC/APC | 7.5 or 10mm | 0.25dB | 0.50dB | -65dB | APC | 2.0/3.0 | Composite | Ceramic |
| Corning Gold Series | ST | 7.5 or 10mm | 0.20dB | 0.50dB | -55dB | UPC | 2.0/3.0 | Composite | Ceramic |
| Corning Gold Series | LC/APC | 7.5 or 10mm | 0.25dB | 0.50dB | -65dB | APC | 2.0/3.0 | Composite | Ceramic |
| Q-Series QuikBend | FC | 7.5 or 10mm | 0.25dB | 0.50dB | -55dB | UPC | 2.0/3.0 | Metal | Ceramic |
| Q-Series QuikBend | FC/APC | 7.5 or 10mm | 0.30dB | 0.50dB | -65dB | APC | 2.0/3.0 | Metal | Ceramic |
| Q-Series QuikBend | LC | 7.5 or 10mm | 0.25dB | 0.50dB | -55dB | UPC | 2.0/3.0 | Composite | Ceramic |
| Q-Series QuikBend | SC | 7.5 or 10mm | 0.25dB | 0.50dB | -55dB | UPC | 2.0/3.0 | Composite | Ceramic |
| Q-Series QuikBend | SC/APC | 7.5 or 10mm | 0.30dB | 0.50dB | -65dB | APC | 2.0/3.0 | Composite | Ceramic |
| Q-Series QuikBend | ST | 7.5 or 10mm | 0.25dB | 0.50dB | -55dB | UPC | 2.0/3.0 | Metal | Ceramic |
| Q-Series QuikBend | LC/APC | 7.5 or 10mm | 0.30dB | 0.50dB | -65dB | APC | 2.0/3.0 | Composite | Ceramic |

Note: Corning Gold Series Bend Tolerant Fiber Jumpers manufactured using 100% Corning components. Q-Series QuikBend jumpers manufactured using the highest quality components.